

ABOUT CHILD'S PASSPORT

We are very excited to provide you with a revamped Child's Passport. You will be able to access important information about the child in your care by using okbenefits.org

MOBILE FRIENDLY
INTUITIVE DESIGN
ANY TIME OF DAY
CONFIDENTIAL



VISIT
OKBENEFITS.ORG

Need help setting up your
OK Benefits account?
Call (405) 522-5050



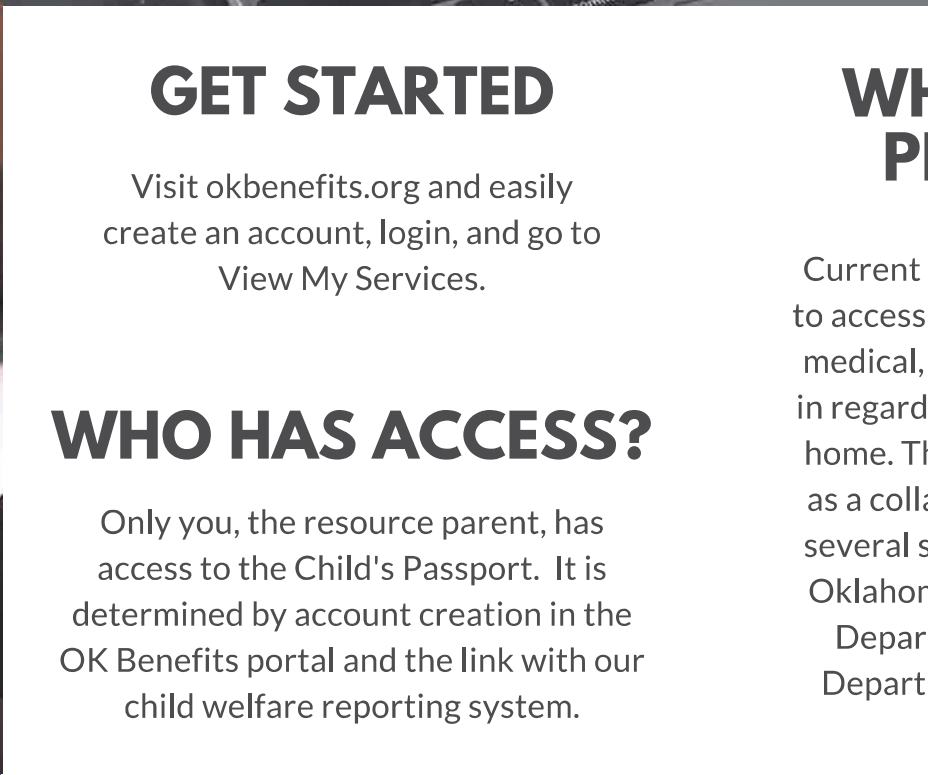
OKLAHOMA
Human Services



OKB

CH
PAS

A man with long, curly brown hair and a beard is sitting behind a woman with dark, curly hair. They are both looking at a tablet held by the woman. The man is wearing a grey sweater, and the woman is wearing a light-colored top. In the background, there is a fireplace with a warm fire burning inside. The scene is dimly lit, with the fire providing the main source of light.



GET STARTED

Visit okbenefits.org and easily create an account, login, and go to View My Services.

WHO HAS ACCESS?

Only you, the resource parent, has access to the Child's Passport. It is determined by account creation in the OK Benefits portal and the link with our child welfare reporting system.

GET STARTED

Visit okbenefits.org and easily create an account, login, and go to View My Services.

WHO HAS ACCESS?

Only you, the resource parent, has access to the Child's Passport. It is determined by account creation in the OK Benefits portal and the link with our child welfare reporting system.

GET STARTED

Visit okbenefits.org and easily create an account, login, and go to View My Services.

WHO HAS ACCESS?

Only you, the resource parent, has access to the Child's Passport. It is determined by account creation in the OK Benefits portal and the link with our child welfare reporting system.

GET STARTED

Visit okbenefits.org and easily create an account, login, and go to View My Services.

WHO HAS ACCESS?

Only you, the resource parent, has access to the Child's Passport. It is determined by account creation in the OK Benefits portal and the link with our child welfare reporting system.

GET STARTED

Visit okbenefits.org and easily create an account, login, and go to View My Services.

WHO HAS ACCESS?

Only you, the resource parent, has access to the Child's Passport. It is determined by account creation in the OK Benefits portal and the link with our child welfare reporting system.

GET STARTED

Visit okbenefits.org and easily create an account, login, and go to View My Services.

WHO HAS ACCESS?

Only you, the resource parent, has access to the Child's Passport. It is determined by account creation in the OK Benefits portal and the link with our child welfare reporting system.